

23RD ANNUAL



MATERIALS: HARD & SOFT



FEBRUARY 6 – APRIL 1, 2010

23RD ANNUAL
NATIONAL CONTEMPORARY CRAFT COMPETITION AND EXHIBITION

MATERIALS: HARD & SOFT

THE MEADOWS GALLERY THE CENTER FOR THE VISUAL ARTS
FEBRUARY 6 — APRIL 1 2010



JUROR STATEMENT

Craft objects are the physical embodiment of ideas. They convey concepts, sensations, experiences, and present a distinctive point of view. As the juror, it is my job to listen to what these objects have to say and select the pieces that demonstrate the greatest depth of thought and quality of craftsmanship. From the vast pool of more than 600-plus submissions—all admirable, appealing, and worthy of consideration—I had the difficult task of “editing” the exhibition to the 80-plus objects that most effectively communicated vision and possibility.

The objects that spoke to me most profoundly were those that seamlessly combined rigor and imagination with expressed intention, intelligent manipulation of material, and expert fabrication. Further, I was engaged and inspired by the clarity and authority of the artworks that robustly affirmed and celebrated the handmade traditions from which they originated. And I was equally intrigued and seduced by the works that asserted their originality through the ideal combination of tradition and innovation, arriving at a unique contemporary sensibility by mixing experimental materials and new technologies with the tried, true, and time-tested. Honoring past traditions, amplifying present-day cultural perceptions and practices, and casting to future currents in craft—these were the “intangible” markers. Evaluating mastery of technique and execution, appraising sensitivity to materials, and assessing levels of invention—these were the qualitative guideposts. Both functioned equally as core criteria against which objects were judged. And when it came time to view the artworks in person and select the winners, the Awards were ultimately given to the pieces that felt most forcefully and vociferously gave voice to the artist’s ideas and emotions, were the most intellectually demanding, and the most visually captivating.

Each artwork included in *MATERIALS. HARD & SOFT* represents a quest on the part of the artist to explore the multiple meanings inherent in craft objects—as artifacts of utility, ritual, celebration, and beauty—and to make these meanings tangible, palpable, and poignant through their expressive hands. Whichever path the artist traveled to fulfill this quest, it is inspiring to witness the gratifying and diverse directions that have resulted from their pursuits. Hopefully, this exhibition is a fruitful and enriching stop along their journey.

Jo Lauria

Juror for *MATERIALS. HARD & SOFT, 2010*

EXECUTIVE DIRECTOR'S STATEMENT

The twenty-third annual *Materials. Hard & Soft* continues to showcase the best of contemporary American Craft. This year 219 artists submitted 606 entries. The submissions were from 39 states (including the District of Columbia) with Texas and California leading the numbers of entries. Jo Lauria, curator, selected an outstanding exhibition. She has a keen eye for both the traditional and innovative use of materials in craft. Fine examples of artisanship fill the show.

Craft continues to evolve from the pure use of materials—fiber, metal, ceramic—to a mix of many craft forms. It is sometimes difficult to tell if a piece is pure fiber or an exquisite ceramic representing fiber. Exacting detail, fresh concepts, and intriguing use of media fill the show. It is our hope that the exhibit entertains, educates and expands the viewer's horizons.

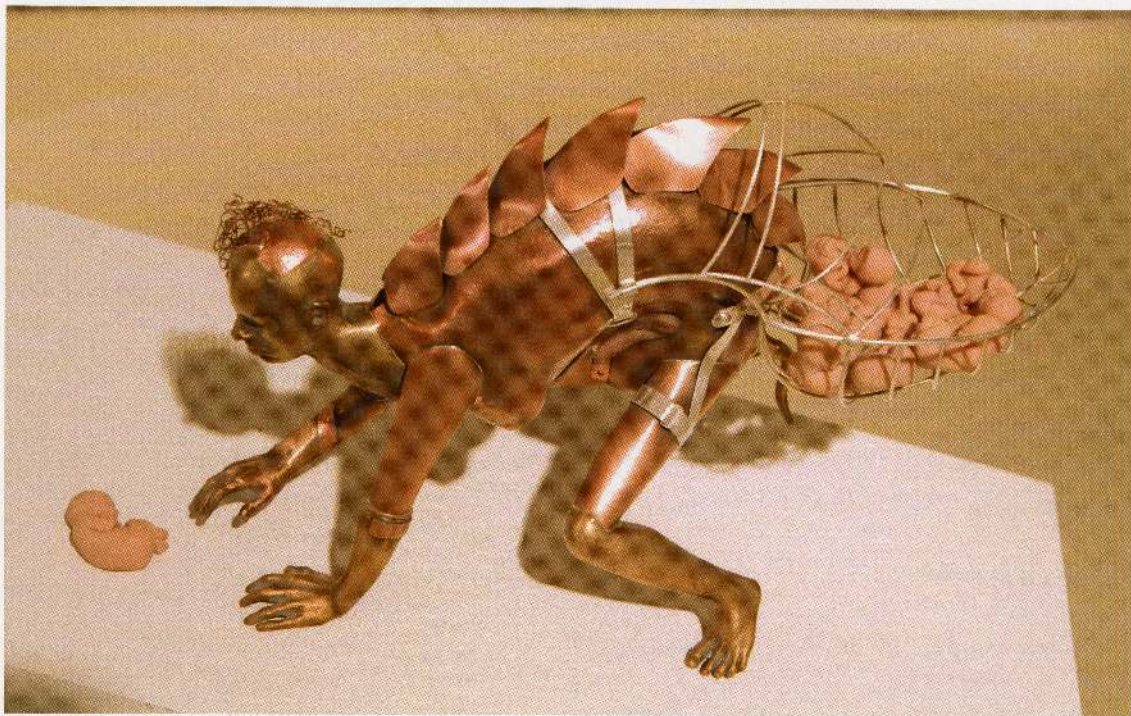
On behalf of the Board and Staff of the Greater Denton Arts Council, we express our appreciation to all those artists who entered *Materials. Hard & Soft*, and our congratulations to those chosen to be in the show.

Enjoy and celebrate the arts with us.

Margaret Chalfant
Executive Director

JUROR AWARDS

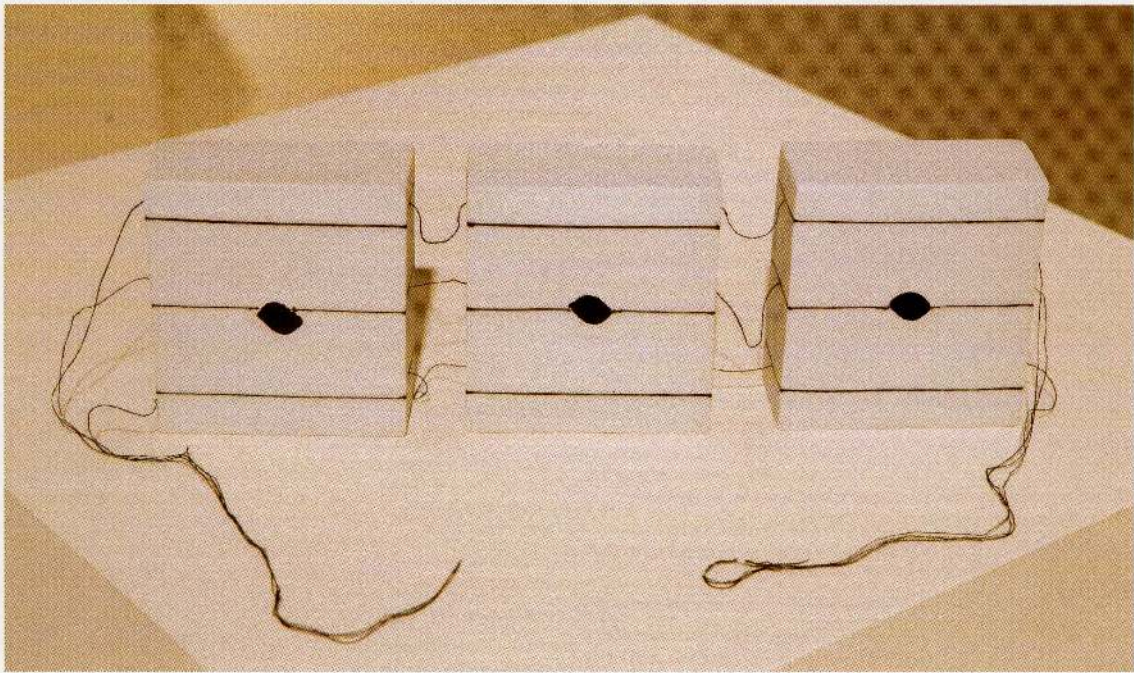
Mindy Herrin	<i>She Beast, the Harvester</i>	\$500
Chris rick	<i>Fountain Elms Brooch Series</i>	\$500
Michelle Tobia	<i>Fence Study #9</i>	\$500
Debbie Barrett-Jones	<i>Aqua Interruptions</i>	\$500
Jan Arthur Harrel	<i>Papaya-Banquet for the Muse Series</i>	\$500
Scott Schuldt	<i>The Re-Education of Smedley Butler</i>	\$500
Adrienne Sloane	<i>Sea Change</i>	\$500
William Pickerd	<i>Flora Magique</i>	\$500
Michael Rohde	<i>Burst Vessel</i>	\$500
Anne Wolf	<i>Caught</i>	\$500



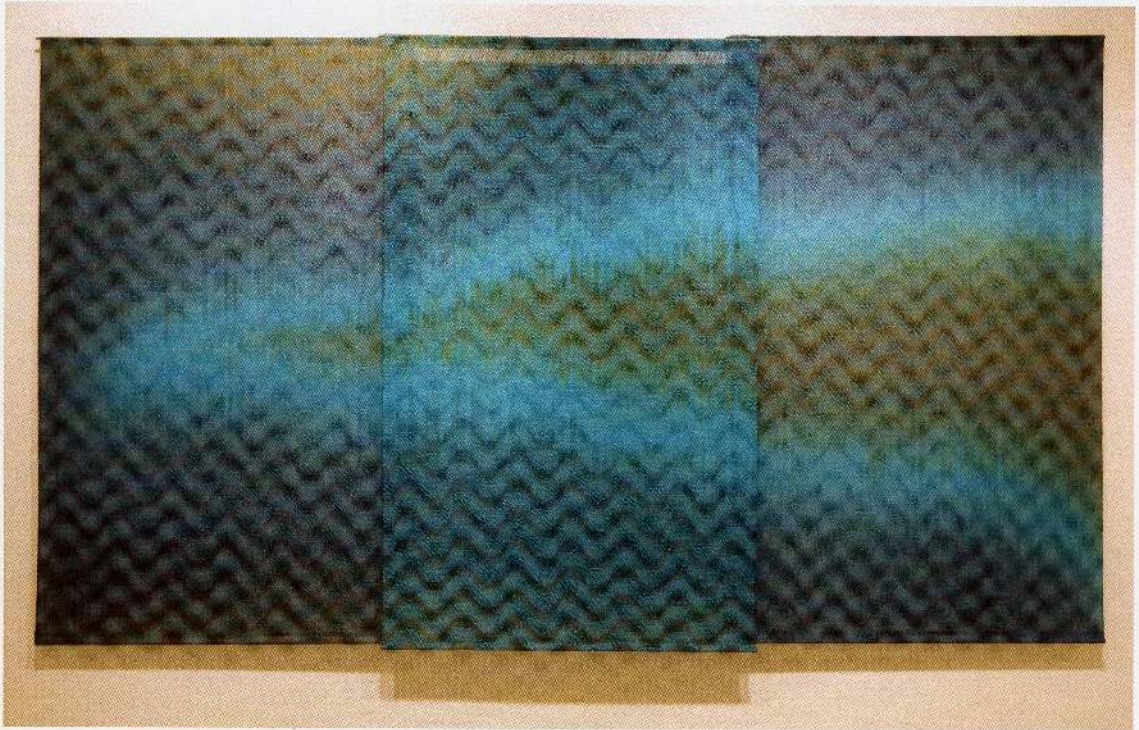
Mindy Herrin Johnson City TN
She Beast, The Harvester
Meta
3 x 8 x 5
2007



Chris rick, Utica, NY
Fountain Elms Brooch Series
Meta
2 x 2 x .5
2009



Michelle Tobia Oshkosh WI
Fence Study #9
Clay
2 x .5 x 3
2007



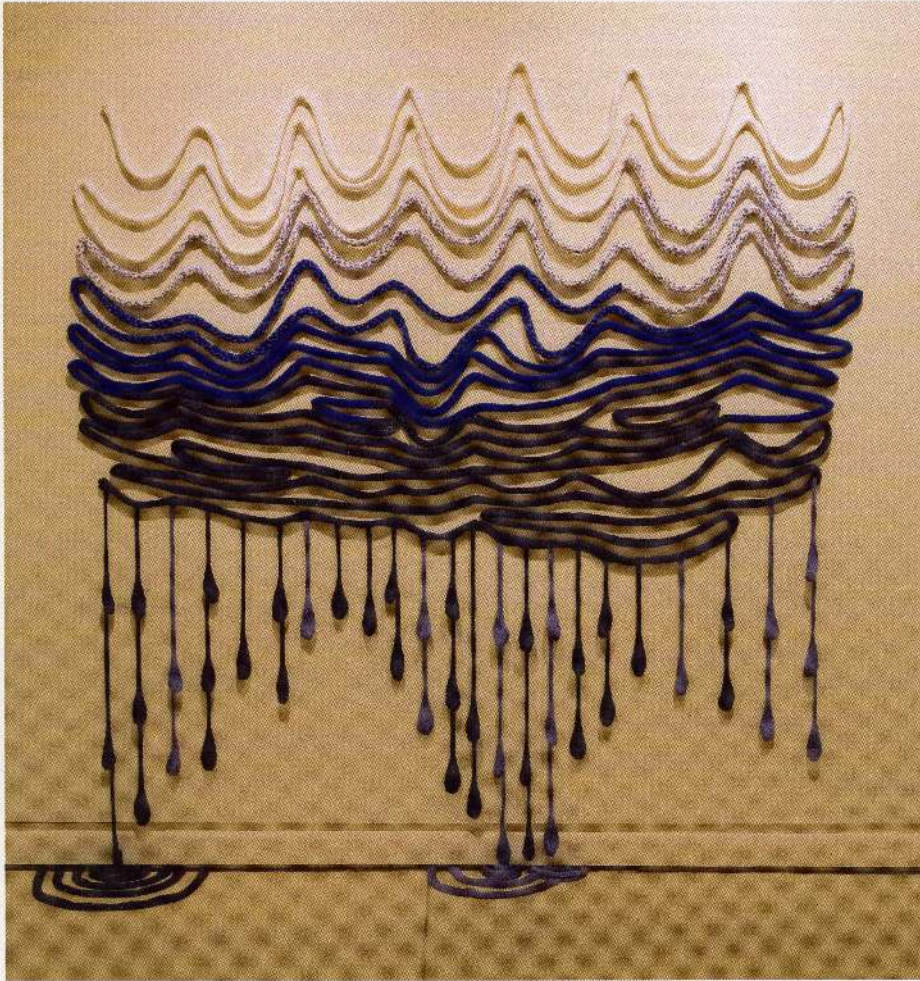
Debbie Barrett-Jones Kansas City MO
Aqua Interruptions
Fiber
00 x 64 x 6
2009



Jan Arthur Harrell Houston TX
Papaya Banquet for the Muse Series
Metal
6 x 16 x 3
2009



Scott Schuldt Seattle WA
The Re-Education of Smedley Butler
Fiber
35 x 2
2009



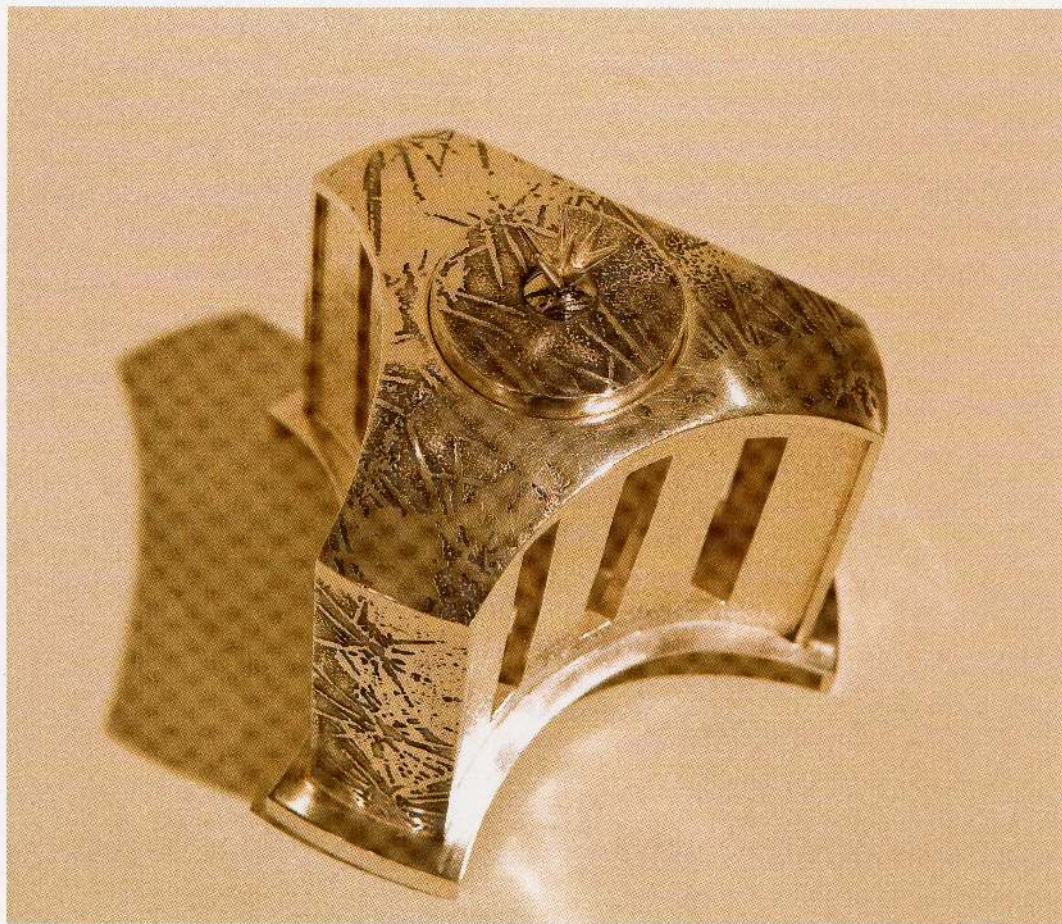
Adrienne Sloane Watertown MA
Sea Change
Fiber
66 x 68 x 0
2009



William Pickerd Springfield OR
Flora Magique
Mixed
75 x 8.5 x 8.5
2009



Michael F Rohde Westlake Village CA
Burst Vessel
Fiber
4 25 x 9.5 x 4 25
2009



Anne Wolf San Diego CA
Caught
Meta
5 x 4.5 x 4.5
2007

ARTISTS

Naomi S. Adams, Denton, TX
Trio
Fiber
40 x 34 x .5
2008

Chris Archer, Manchester, NH
Echo of a Moment Yet to Come
Clay
10 x 11 x 9
2007

Erica Stankwytych Bailey, Fayetteville, NC
Oval Brooch
Metal
2 x 3 x .5
2009

Debbie Barrett-Jones, Kansas City, MO
Aqua Interruptions
Fiber
100 x 64 x 6
2009

Parker Brown, Denton, TX
A Leaky Vessel
Metal
6 x 4 x 4
2008

Magi Calhoun, Shady Shores, TX
Two Moons
Clay
20 x 13 x 8
2008

Jim Connell, Rock Hill, SC
Green Carved Teapot
Clay
17 x 12 x 10
2007

Dan Connelly, Elburn, IL
Take As Directed
Metal
4 x 4 x 20
2006

Lynn Cool, Lawrence, KS
Biophilia #1 Six Fragments of Nature
Mixed
34 x 14 x 2.5
2009

Casey Cooper, Corpus Christi, TX
Untitled Blue
Metal
40 x 16 x 6
2008

Angela Cunningham, Somerville, MA
Matriarch
Clay
10 x 9 x 10
2009

Angela Cunningham, Somerville, MA
Sprout
Clay
10 x 6.25 x 10
2008

Denise M. DeRose, Oakland, CA
Il Nodo (The Burl) Bag
Wood
7 x 4 x 2
2009

Roberta Eichenberg, Emporia, KS
Dog Nap
Glass
13 x 7 x 13
2008

Jenny Gawronski, Boulder, CO
Cupcake and Dessert Setting
Clay
32 x 8
2009

Paula J. Gron, Corpus Christi, TX
Baskets 4 Bombs
Mixed
14 x 9 x 23
2009

*All measurements are in inches (except as noted)
Height x Width x Depth*

Stephanie Grubbs, Edmond, OK
Red Tower
Fiber
7 x 22 x 8
2008

Jan Arthur Harrell, Houston, TX
Papaya Banquet for the Muse Series
Metal
16 x 16 x 3
2009

Passle Helminski, Erie, PA
Water Music
Fiber
22 x 33 x 21
2008

J Shalene Henley Healdton, OK
Pacify Me
Metal
4 x 2.5 x 3
2008

Mindy Herrin, Johnson City TN
She Beast, The Harvester
Metal
13 x 8 x 5
2007

Mindy Herrin, Johnson City TN
Pelvic Brooch III
Metal
3.5 x 4 x 1.5
2007

Suzanne Hesh, Tucson, AZ
My Favorite Things
Fiber
8 x 17
2009

Steve Hilton, Wichita Falls, TX
3,381 3,382 3,383
Clay
17 x 17 x 8
2009

Chris Irick, Utica, NY
Fountain Elms Brooch Series
Metal
2 x 2 x .5
2009

Amanda Jaffe, Las Cruces, NM
Kayak for Eddie
Clay
3 x 12 x 10.5
2009

Kyleen Jeans, San Diego, CA
Blistered
Mixed
5 pendants, each 4 x 3 x 1
2008

John L. Jensen, Pasadena, CA
Incinder
Metal
10.5
2007

Elizabeth F Keller Conway, SC
High Tea #5 (Acer/Momiji) w 2 cups
Clay
9.5 x 21 x 7
2009

Barbara Knuth, San Diego, CA
Short and Stout
Metal
8 x 6 x 5
2009

Maria R Kovacs, Livermore, ME
Pushing the Envelope, Where are the Cod?
Fiber
15 x 15 x 1.5
2007

Lialia Kuchma, Chicago, IL
Ranunculus
Fiber
48 x 52
2007

All measurements are in inches (except as noted)
Height x Width x Depth

Minkyu Lee, Green Bay, WI
Hidden Structure Revealed #11
Clay
9 x 12 x 9
2007

Sung-Yeoul Lee, Smithville, TN
Implant I
Metal
2 125 x 2.5 x 2.5
2009

Marianne Levy, Austin, TX
Sultan Swing
Clay
11 x 16 x 7.5
2009

Linda Lewis, Edinburg, TX
1868 Minus
Fiber
41 x 43
2009

Julia Lowther Seattle, WA
Ripples
Metal
Necklace 29.25 x 2.75 x .5
Earrings 2.625 x 1.5 x 125
2007

Kenneth MacBain, Morristown, NJ
Porcupine Brooch
Metal
2.5 x 1.25 x 1
2008

Kenneth MacBain, Morristown, NJ
Cube Bracelet
Mixed
4 x 4 x 3.5
2008

Barbara Mann, Watkinsville, GA
Set of Three Party Rings
Metal
1 x 2 x .5 each
2008

Clay McLaurin, Atlanta, GA
Grandmother's Table Runner
Paper
28 x 18
2009

Lisa Medlen, La Mesa, CA
Gold Drop (brooch)
Metal
2.5 x 1.5 x .5
2009

Christopher Melia, Denton, TX
Teapot
Clay
7 x 8 x 7
2009

Libby & Jim Mijanovich, Marshall, NC
Double Down
Fiber
33 x 33 x 1.5
2009

Alison Greer Pack, Radford, VA
Happily Ever After
Metal
Under 12 x 12
2007

Sophia Jung-Am Park, San Diego, CA
Sprouting
Metal
6 x 12 x 2.5
2008

Mary Hallam Pearse, Athens, GA
Bling Brooch #4
Mixed
2 x 1.5 x 4.5
2008

Sarah Perkins, Springfield, MO
Haze Formation
Metal
4 x 8 x 3.5
2009

*All measurements are in inches (except as noted)
Height x Width x Depth*

William Pickerd, Springfield, OR
Flora Magique
Mixed
11.75 x 8.5 x 8.5
2009

Kayleigh Porter Baltimore, MD
Fit the Mold
Clay
4 x 20 x 14
2009

Michael Radyk, Athens, GA
Swan Point
Fiber
32 x 54 x 3
2009

Rod Repogle, Sandia Park, NM
Water Feature
Mixed
18 x 23.5
2009

Michael F Rohde, Westlake Village, CA
Burst Vessel
Fiber
4.25 x 9.5 x 4.25
2009

Allan Rosenbaum, Richmond, VA
Cascade
Glass
7.5 x 11.5 x 7.5
2009

Scott Schuldt, Seattle, WA
The Re-Education of Smedley Butler
Fiber
35 x 21
2009

Casey Sharpe, Parksley, VA
And I Left My Body Behind.
Metal
4.5 x 3 x .75
2008

Adrienne Sloane, Watertown, MA
Sea Change
Fiber
66 x 68 x 10
2009

Adrienne Sloane, Watertown, MA
Truth to Power
Metal
24 x ceiling hung X 36
2007

Lauren Smith, Denton, TX
Gravy Boat (with Tray & Ladle)
Clay
9.5 x 5 x 6
2009

Michael Stephen, Tyler TX
*Little Boys leave Small Impressions,
Fat Men Leave Big Indentations*
Mixed
4 x 10' x 2'
2009

Boline Strand, San Francisco, CA
Cupolae Necklace
Metal
.7 x 2 x 17.3
2007

L. Sue Szabo, Toledo, OH
Brooch for Octo-Mom
Metal
2 x 2 x 25
2009

Cheryl Tall, Carlsbad, CA
Parallel Lives
Clay
21 x 23 x 15
2007

Loring Taoka, Denton, TX
Let's Not Talk About It
Metal
6 x 3 x 6
2009

*All measurements are in inches (except as noted)
Height x Width x Depth*

David L. Terpening, Charlotte, NC
The Family
Wood
12 x 6 x 10
2009

Catherine Theodore, Uniontown, OH
We re Not in Ohio Anymore
Fiber
54 x 54
2009

Leslie Thompson, Oakview, CA
Simple Finline Jar with Checked Collar
Mixed
9 x 9 x 9
2008

Chris Tinnen, Plano TX
Homunculus #4
Metal
5x 23 x 12
2008

Michelle Tobia, Oshkosh, WI
Fence Study #9
Clay
12 x 1.5 x 3
2007

Aleksandra Vali Aurora, IL
Seeds of Life and Lust
Mixed
2 125 x 5 x 2
2008

Jill Rumoshosky Werner Wichita, KS
Dispensed
Mixed
72 x 9
2008

Elise Winters, Haworth, NJ
Tropic Brio Neckpiece
Mixed Media
20" long
2008

Anne Wolf San Diego, CA
Caught
Metal
5 x 4.5 x 4.5
2007

Jordann Siri Wood, Pittsburgh, PA
Mint Prize
Clay
24 x 21 x 8.5
2008

Pamela Zimmerman, Washington, NC
Amorphophallus Textillus
Mixed Media
15.5 x 14 x 15.5
2007

*All measurements are in inches (except as noted)
Height x Width x Depth*

ACKNOWLEDGEMENTS

GDAC BOARD OF DIRECTORS

Kraig Springer	<i>President</i>
Jorge Urbina	<i>Vice President, Finance</i>
André "Frenchy" Rheault	<i>Vice President, Membership</i>
Diane Prentice	<i>Vice President, Exhibitions and Education</i>
Karla K. Morton	<i>Secretary</i>
Peter McCleskey	<i>Treasurer</i>
Mark Burroughs	<i>Immediate Past President</i>

Mike Arzamedi, Julius Bershell, Rita Burlison, Robert (Bob) Dickson, Walter Eagleton,
M. Jean Greenlaw, Lisa Hill, Pam Kimble, Sandy Kristoferson, Amy Manuel, June McNeill,
Jerry Mohelnitzky, Eva Poole, Diane Prentice, Sandra Robinson (TAG), Sonja Rogers,
Karen Sandelin, Elizabeth Scott and Joy Siegmund

GDAC ADMINISTRATIVE STAFF

Margaret Chalfant	<i>Executive Director</i>
John Riegelman	<i>Facilities Manager</i>
Gwen Mulkey	<i>Administrative Assistant</i>