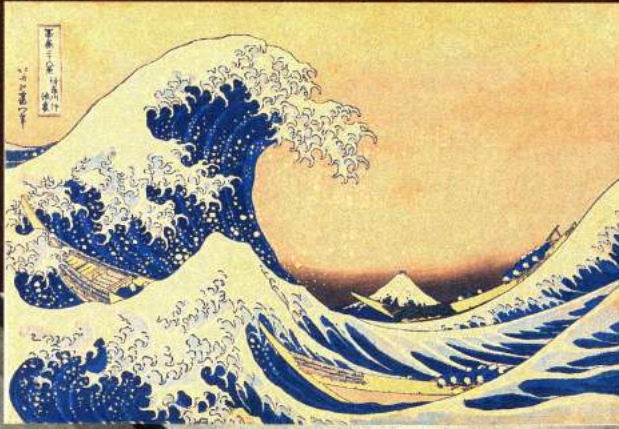
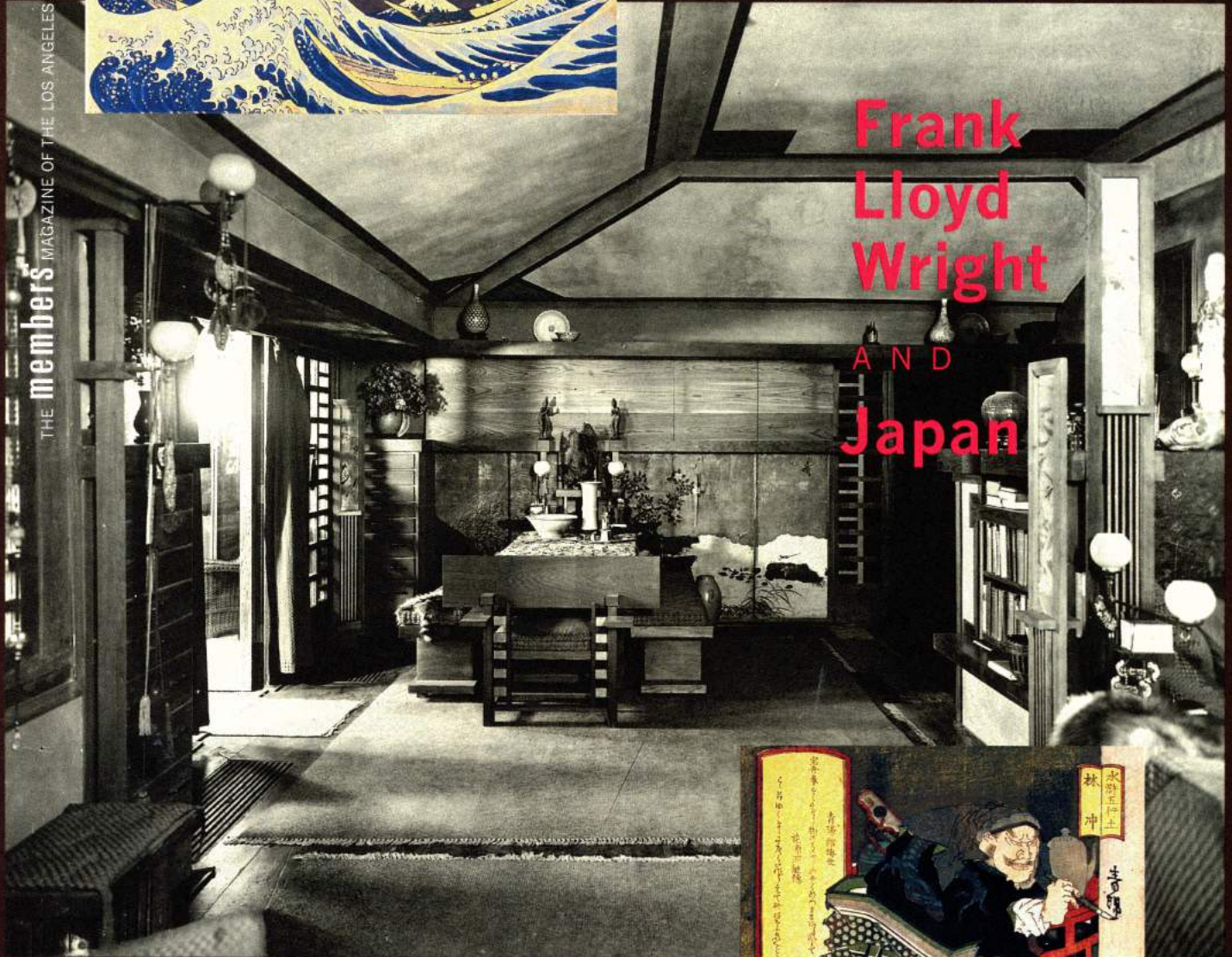
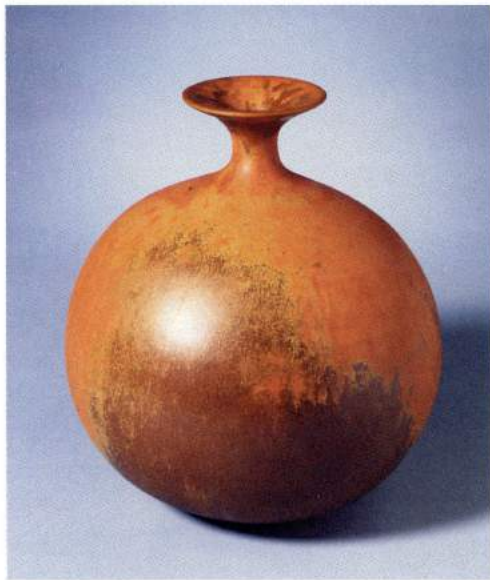


at the MUSEUM



Frank Lloyd Wright AND Japan





Above: Laura Anderson (United States, b. 1902) **Yellow Orange Bottle**, ca. 1980, earthenware, 8 1/2 x 7 1/2 (diam) in., gift of Howard and Gwen Laurie Smits
 Right: Anne Kraus (United States, b. 1956), **Adventures of Delphine (Delphine Carries a Cornerstone)**, 1987, porcelain, 11 1/2 x 10 x 6 in., gift of Howard and Gwen Laurie Smits

Women Pioneers and Perfecters in Clay

SELECTIONS from LACMA's decorative arts collection are featured in the exhibition *Women's Contributions to Clay: 60 Years of Enrichment*, currently on view at the Pacific Design Center, 8687 Melrose Avenue, in West Hollywood.

The show celebrates the innovation and imagination of women working in the field of ceramic art since the late 1930s. The European immigrant ceramists Maija Grotell, Marguerite Wildenhain, and Gertrud Natzler brought to the United States their skill with the potter's wheel and introduced through their studio instruction a Scandinavian and Bauhaus aesthetic, emphasizing the equal importance of purity of form and functionalism.



Succeeding these ceramists were a group of women who became professors at art institutes and universities and who established ceramics as

an academic subject. Most notable of this group are Laura Andreson (UCLA), Ruth Duckworth (University of Chicago), Viola Frey (California College of Arts and Crafts), Andrea Gill (University of New York at Alfred), and Vivika Heino (Chouinard Art Institute). Collectively these women have advanced the art of ceramics through their teaching of wheel throwing and hand-building methods, firing techniques, glaze formulation, procedures for monumental sculpture, and surface design.

Equally important contributors to the field are recognized studio artists such as Virginia Cartwright, Annette Corcoran, Roseline Delisle, Karen Karnes, Karen Koblitz, Marilyn Levine, Elsa Rady, Judith Salomon, Anna Silver, Beatrice Wood, and Betty Woodman. They have been prolific producers of ceramic art objects and have remained constant in their quest of perfected style, even when that style has not been in keeping with the shifting winds of artistic taste.

Finally, several women added yet another dimension to ceramic art, that of narrative content. Judy Chicago, Cindy Kolodziejki, and Anne Kraus use their ceramic forms to tell tales both political and private.

These influential women ceramists of the past 60 years have expanded on the clay art vocabulary and have elevated ceramic art to the broader context of the fine arts.

The exhibition runs until November 24 and is on view in the Center Green Rotunda Gallery •

Right: Willie Robert Middlebrook (United States, b. 1957), **Look at Me**, 1994, gelatin-silver print, 8 x 16 ft., lent by the artist
 Below right: Gustave Caillebotte (France, 1848-94), **Young Man at His Window**, 1876, oil on canvas, 46 x 32 1/4 in., private collection

GENERAL INFORMATION

(213) 857-6000; TDD: (213) 857-0098

HOURS: Tuesday–Thursday, 10 am–5 pm; Friday, 10 am–9 pm; Saturday–Sunday, 11 am–6 pm. Admission to the museum is free the second Wednesday of each month, except for ticketed exhibitions. Closed Mondays, Thanksgiving, and Christmas. The box office closes a half hour before the museum and opens one hour prior to each event. For special orders, advance purchase, and other information call (213) 857-6010.

ADMISSION: Adults, \$6; students 18+ with ID and senior citizens 62+, \$4; children/younger students ages 6-17, \$1; children 5 and under are admitted free.

MUSEUM SHOP: Regular museum hours. There is a 10% discount for members on all items. Call (213) 857-6146 for more information.

THE PLAZA CAFE: Regular museum hours. The cafe closes a half hour before the museum.

PARKING: Available directly across from the museum's entrance on Wilshire Boulevard and Spaulding Avenue. \$5, free on Fridays after 5 pm.

WHEELCHAIR ACCESS: An elevator is located immediately inside the museum's Wilshire Boulevard entrance.

SPECIAL NEEDS: Through our Barrier Free Programs, auxiliary aids and services are available for seniors and adults and children with disabilities. Please call or write to ensure that specific needs will be met at the time of your visit.

At the Museum is a members' service. It is produced by the Media and Public Affairs Office of the Los Angeles County Museum of Art.

EXHIBITION SCHEDULE

Opening

Frank Lloyd Wright and Japan

SEPTEMBER 7 THROUGH JANUARY 7

Pavilion for Japanese Art

Assembled Work: Selected Photographs from the Permanent Collection

SEPTEMBER 28 THROUGH JANUARY 7

Hammer bridge, Petersen gallery

Continuing

Adrian: The Couture Years, 1942–52

THROUGH JANUARY 7

Costumes and Textiles galleries, Ahmanson Building

Claire Henze and Craig Cowan: Intense Observations

THROUGH OCTOBER 1

Photo foyer, second level, Hammer Building

Selections from the Bronson Collection of Art from Zaire

THROUGH OCTOBER 29

Atrium gallery, Ahmanson Building

Women's Contributions to Clay: 60 Years of Enrichment

THROUGH NOVEMBER 24

Pacific Design Center

Sam Francis: The Last Works

THROUGH NOVEMBER 5

Second and third levels, Anderson Building

Closing

Annette Messenger

THROUGH SEPTEMBER 3

Plaza level, Anderson Building

Kandinsky: Compositions

THROUGH SEPTEMBER 3

Plaza level, Anderson Building

Gustave Caillebotte: Urban Impressionist

THROUGH SEPTEMBER 10

Plaza level, Hammer Building

Emil Nolde: The Painter's Prints

THROUGH SEPTEMBER 10

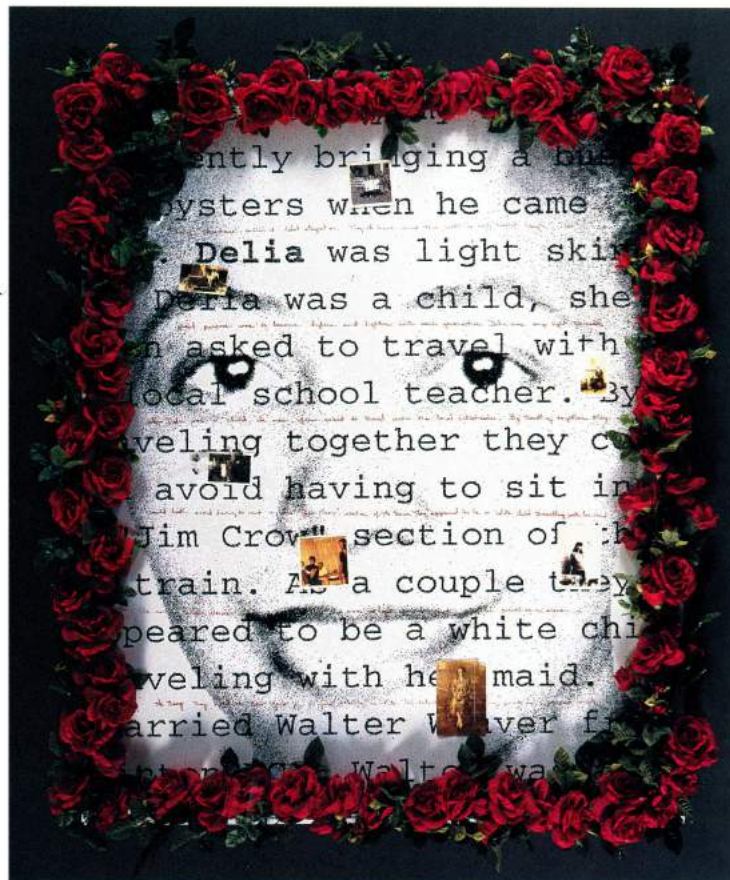
Prints and Drawings galleries, Hammer Building

P.L.A.N.: Photography Los Angeles Now

THROUGH SEPTEMBER 17

Photography galleries, second level, Hammer Building

5905 Wilshire Boulevard
Los Angeles, California 90036



Above: Pat Ward Williams (United States, b. 1948), **Delia**, 1992, gelatin-silver print and mixed media, 60 x 48 in., collection of Eileen and Peter Norton, Santa Monica

Cover: Living room dining cove, Taliesin II, Frank Lloyd Wright's home in Spring Green, Wisconsin, photograph courtesy the Frank Lloyd Wright Foundation; inset top: Katsushika Hokusai (Japan, 1760–1849), **Behind the Waves off Kanagawa (The Great Wave)**, ca. 1830–31, from the series *Thirty-six Views of Mount Fuji*, color woodblock print, collection of the Grunwald Center for the Graphic Arts, UCLA, purchased from the Frank Lloyd Wright collection; inset bottom: Totoya Hokkei (Japan, 1780–1850), **Earth**, late 1820s, from the series *The Five Elements of the Suikoden*, *surimono*, color woodblock print, *shikishiban* format, lent by the Frank Lloyd Wright Foundation, Scottsdale, Arizona